

# West Aegean

3rd Edition 2014  
ISBN 978 184623 575 7



## Supplement No.2

Supplement Date: May 2017

### Caution

Every effort has been made to ensure the accuracy of this supplement. However, it contains selected information and thus is not definitive and does not include all known information on the subject in hand. The authors and Imray Laurie Norie & Wilson Ltd believe this supplement to be a useful aid to prudent navigation, but the safety of a vessel depends ultimately on the judgement of the navigator, who should assess all information, published or unpublished, available to him/her.

With the increasing precision of modern position fixing methods, allowance must be made for inaccuracies in latitude and longitude on many charts, inevitably perpetuated on some harbour plans. Modern surveys specify which datum is used together with correction figures if required, but older editions should be used with caution, particularly in restricted visibility.

This supplement contains amendments and corrections sent in by a number of cruising yachtsmen and women, in addition to those culled from official sources such as *Notices to Mariners*.

Note where lights have been modified in this text do please remember to alter them on the appropriate plan.

### Author's Caution

It must be emphasised that none of the charts, plans or sketch plans shown in this guide should be used for navigation, nor should they be in any way considered as substitutes for the official charts and other nautical reference materials which every vessel is obliged by international law to have on board.

### Page 19 Telecommunications

From June 2017, all users will be able to use their phones anywhere in the EU with the same tariff as in their home country. Thus UK call, text, and data allowances can apply. There will be no charge to receive calls. This will virtually eliminate roaming charges within the EU.

Note that this EU ruling is subject to 'fair use' policy i.e. for short term use during a typical holiday for a fortnight or so. Check carefully with your provider for charges outside your allowances.

Local calls i.e. those not to UK numbers, may not be included. Those spending longer away from home will usually lose their allowances after a certain period and will be better off getting a local SIM. Also remember that tethering is not always permitted while roaming.

### Page 22

#### Traffic document

A new DEKPA (€50) must be obtained (even if you have an existing one) in 2017. It must be stamped by the Port Police once each year.

#### Transit log

Transit log now valid for 18 months with 6 month extension possible.

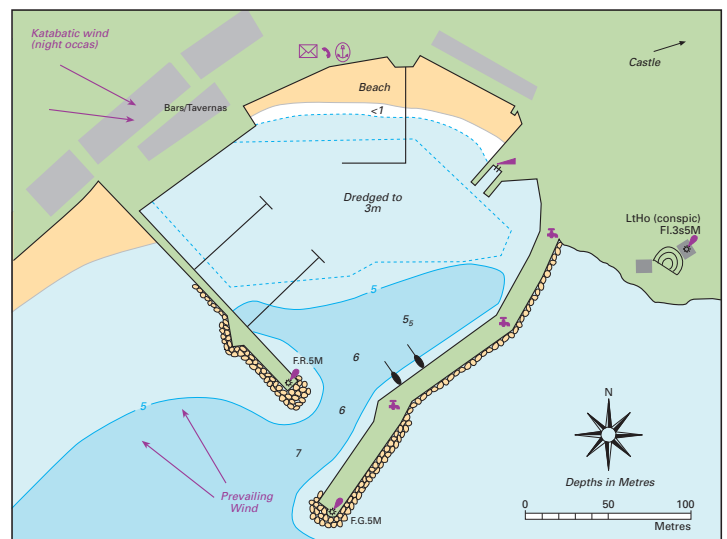
#### Harbour dues (€/metre)

Vessel length	7-10m	10-15m	Over 15m
Private boats	0.41	0.47	0.55
Charter boats	0.20	0.20	0.20

Alongside berths are subject to a 25% surcharge. All rates are subject to VAT at 23%.

### Page 146 Astrous

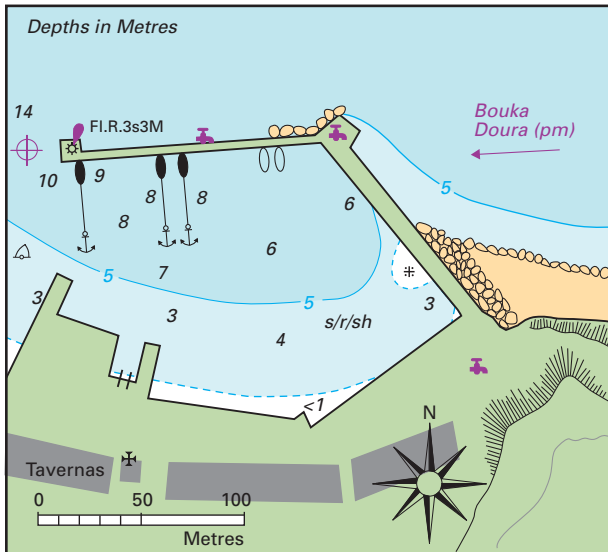
See plan below for new harbour layout.



ASTROUS  
37°24'76N 22°46'01E WGS84

**Page 149 Tiros**

See plan below for new harbour layout.



**TIROS**  
⊕37°14'.71N 22°52'.06E WGS84

*Please keep checking this site to ensure you have the latest information.*

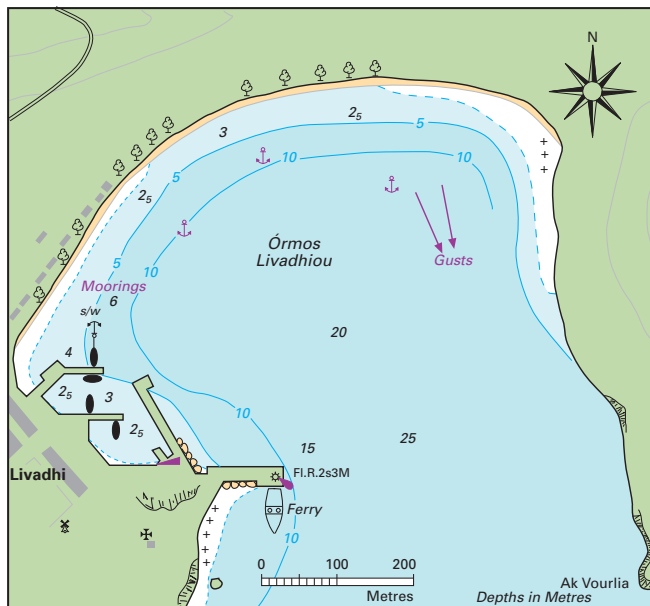
**Acknowledgements**

Thanks to all who sent in information for this supplement. As always we are happy to receive any new data via Imray.

© Rod & Lu Heikell  
COWES, May 2017

**Page 186 Livádhi**

Livádhi harbour has been developed with more yacht berths. Laid moorings at some berths. See plan below.



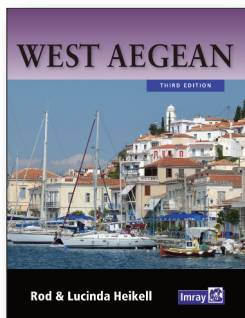
**LIVADHI (SERIFOS)**

**Page 249 Ahilio**

Charter operation reported no longer based in Ahilio.

**Page 252 Órmos Vathoudhi**

Charter operation reported no longer based at the jetty in Órmos Vathoudhi.



## West Aegean

3rd Edition 2014  
ISBN 978 184623 575 7

### Supplement No.1

Supplement Date: March 2016



### Caution

Every effort has been made to ensure the accuracy of this supplement. However, it contains selected information and thus is not definitive and does not include all known information on the subject in hand. The authors, and Imray Laurie Norie & Wilson Ltd believe this supplement to be a useful aid to prudent navigation, but the safety of a vessel depends ultimately on the judgement of the navigator, who should assess all information, published or unpublished, available to him/her.

With the increasing precision of modern position fixing methods, allowance must be made for inaccuracies in latitude and longitude on many charts, inevitably perpetuated on some harbour plans. Modern surveys specify which datum is used together with correction figures if required, but older editions should be used with caution, particularly in restricted visibility.

This supplement contains amendments and corrections sent in by a number of cruising yachtsmen and women, in addition to those culled from official sources such as *Notices to Mariners*.

Note where lights have been modified in this text do please remember to alter them on the appropriate plan.

#### Author's Caution

It must be emphasised that none of the charts, plans or sketch plans shown in this guide should be used for navigation, nor should they be in any way considered as substitutes for the official charts and other nautical reference materials which every vessel is obliged by international law to have on board.

#### Page 22

##### Indian Ocean Puffer Fish (Silver-checked toadfish or Rabbit nose fish)

A relation of the reknowned Japanese Fugu that has arrived in the Mediterranean via the Suez Canal. The Lagocephalus Sceleratus bio-concentrates Tetrodotoxin (TTX), a potentially lethal neurotoxin which causes paralysis and death. Eating as little as 200g of the fish will at the very least make you very ill. The fish can grow up to 1m in length, weighing up to 7kg. Mature fish feed on molluscs, preferring sandy bottom habitats between 5-30m depths with sea grass cover. As with all puffer fish it can expand its body by swallowing water. The body does not have scales, and has a noticable dorsal line, spotty grey brown coloured above, white below. They have four blisteringly sharp teeth, in almost razor form which easily cut through fishing nets.

#### Page 147 Ástrous

Harbour works complete. Berth on quay or pontoon. Some laid moorings. Water. 220V.

#### Page 149 Tíros

Harbour works almost completed. Increased yacht berths. Laid moorings. Water. 220V.

#### Page 182 Loutra

Visitors usually on outside quay. Surge with meltemi. Harbourmaster ☎ 22810 31666

#### Page 207 Psathi

Work almost completed on quay development.

#### Page 227 Néa Marmari

Plans for a new ferry mole to S of harbour. Further yacht berths to be developed in N harbour.

#### Page 275 Nísos Alonnisos

As of 1 December 2015 the island has banned plastic bags. The island already has a good recycling service, and is aiming to be Greece's 'Greenest Island'.

*Please keep checking this site to ensure you have the latest information.*

#### Acknowledgements

Thanks to all who sent in information for this supplement. As always we are happy to receive any new data via Imrays.

© Rod & Lu Heikell  
Cowes, March 2016