

Kintyre to Ardnamurchan (2015)

This PDF file contains all the amendments for the above volume of the CCC Sailing Directions issued since the edition date shown. They are grouped by the date of issue and listed by page number. Plans are included only where major changes have been made or when certain amendments are difficult to describe.

Users should be aware that the amendments to this website are not made with the same frequency as those issued by official hydrographic and navigational sources. Accordingly it remains necessary for those who use the CCC Sailing Directions as an aid to navigation to consult the most recent editions of Admiralty charts, all relevant Notices to Mariners issued by the UKHO, NLB, Port Authorities and others in order to obtain the latest information.

Caution

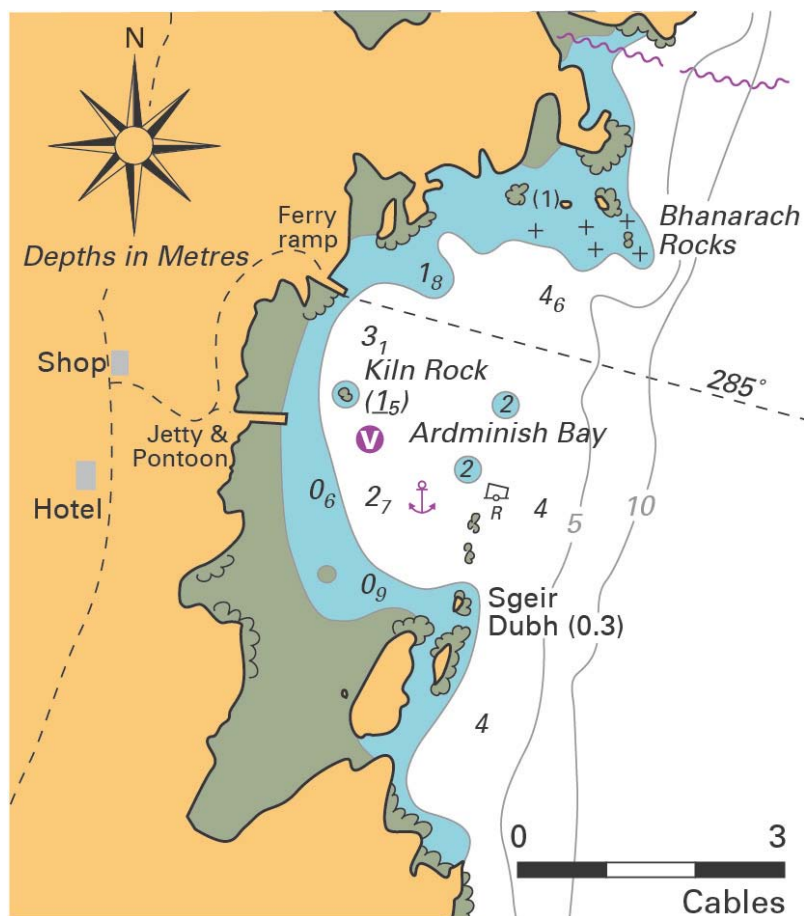
Whilst the Publishers and Author have used reasonable endeavours to ensure the accuracy of the contents of the Sailing Directions, and these amendments to them, they contain selected information and thus are not definitive and do not include all known information for each and every location described, nor for all conditions of weather and tide. They are written for yachts of moderate draft and should not be used by larger craft. They should be used only as an aid to navigation in conjunction with official charts, pilots, hydrographic data and all other information, published or unpublished, available to the navigator. Skippers should not place reliance on the Sailing Directions in preference to exercising their own judgement.

To the extent permitted by law, the Publishers and Author do not accept liability for any loss and/or damage howsoever caused that may arise from reliance on the Sailing Directions nor for any error, omission or failure to update the information that they contain.

The plans in the Sailing Directions and amendments are not to be used for navigation. They are designed to support the text and should at all times be used with navigational charts.

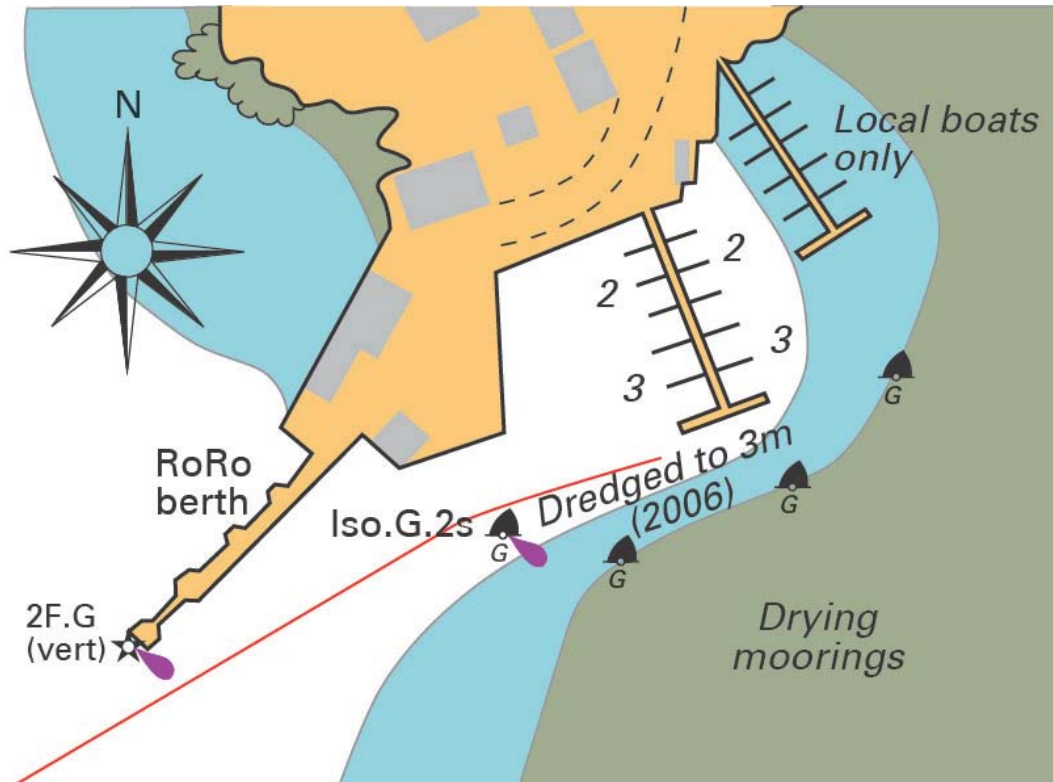
Amendments added Apr 2016

Page	Contents; Key plan On the plan opposite the list of contents amend 'Northern Ireland' to 'Republic of Ireland'	No. 789
Page 7	Introduction; CG Forecast timing correction p.7; RH col; <i>Coastguard forecast areas</i> ; para 2; Line 5; Delete '1710' and substitute '1610'	No. 847
Page 22	Sound of Gigha, Ardminish Bay; Rocks reported A recent survey has identified two 2m rock patches less than a cable east of the moorings. See amended plan below. p.22; RH col; <i>Directions</i> ; para 2; Line 8; Insert after 'port' 'but note the 2m rock patches north of it'	No. 885



Page 26	West Loch Tarbert; Awash rock found p.26; Plan (upper left); Delete the sounding '(0.9)' due south of Eilean Eoghainn and the 2m rock symbol associated with it and substitute a symbol for an awash rock in the same position.	No. 886
---------	---	---------

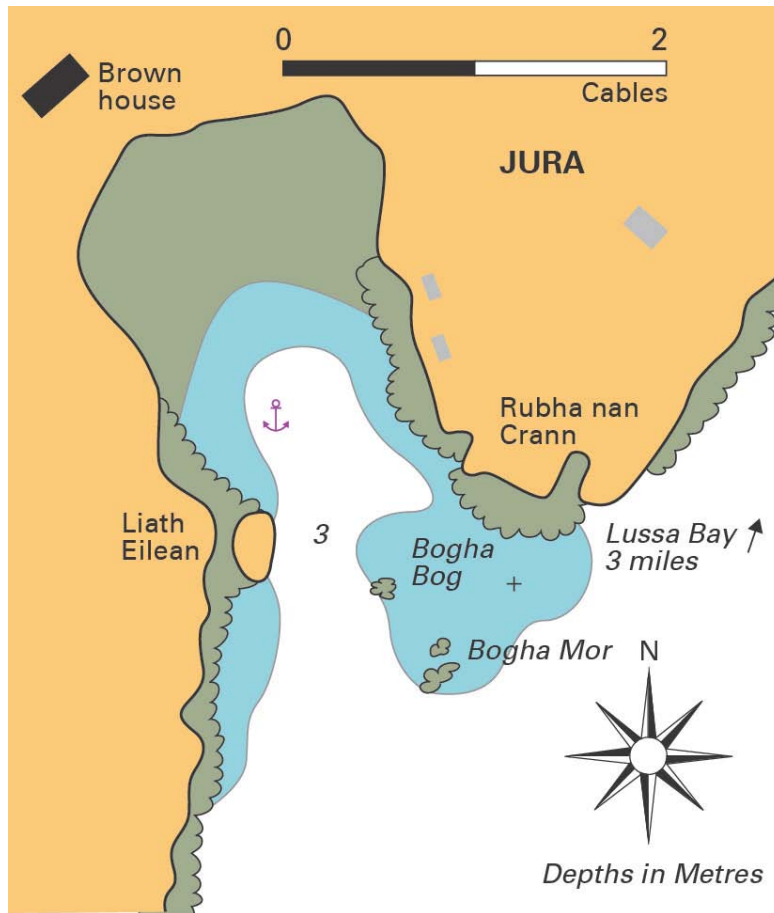
p.31; LH col; Para 2; Line 3; **Insert** after 'marked by': 'a starboard hand buoy (Iso.G.2s) and'
 p.31; LH col; *Lights*; **Add** new line 'Inner harbour channel G conical buoy Iso.G.2s'
 p.30; Plan of Port Ellen Marina; **Insert** symbol for starboard hand buoy and Iso.G.2s as in the plan below. **Insert** this buoy also in the upper plan, Port Ellen.



p.35; LH col; *Directions*; para 1;
 Line 2; **Delete** 'off' **substitute** 'east of'
 Line 4; **Delete** '1½ and 2' and **substitute** '1 and 1½'
 Lines 4-5; **Delete** 'all dangers.' and **substitute** 'them.'

p.43; LH col; *Lights*; Line 2; **Amend** range of light to 18M
 pp. 42 & 44; Plans; **Amend** range of light on plans on both these pages

p.58; RH col; para.3; Line 4; **Delete** all from '(although its extent...)' to the end of para.4 and **substitute** a single para: 'Enter the bay from the south passing close to Liath Eilean, keeping a brown house closed behind, it until the island is abeam; from north and east pass at least 2 cables south of Rubha nan Crann before turning into the bay.
p.58; Plan; *Tarbert Bay*; Add house as plan below



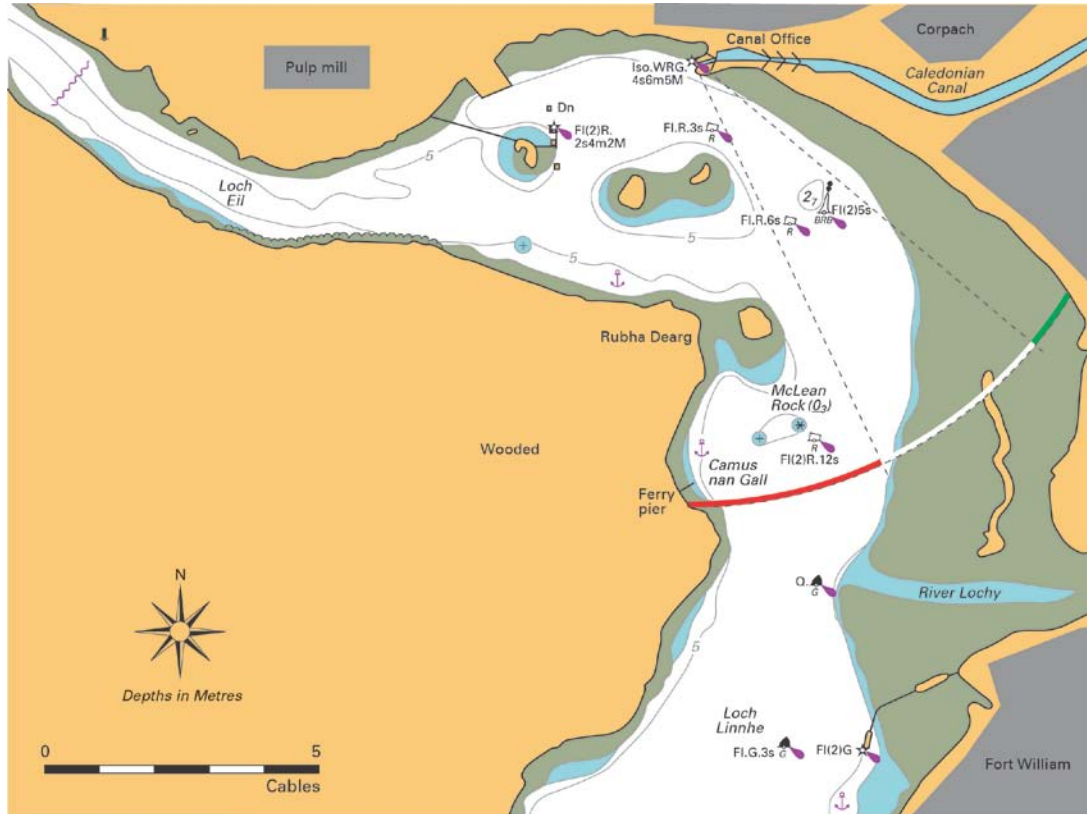
Page 74	Loch Craignish; Black Rock (Eilean Dubh) p.74; LH col; para. <i>West Side</i> ; Line 2; Delete 'SSE' and substitute 'SSW'	No. 874
Page 78	Craignish Point; Loch Beag p.78; para. <i>Loch Beag</i> ; Line 1; Delete 'NNW' and substitute 'NNE'	No. 875
Page 82	Sound of Luing; Belnahua p.82; RH col; para.1; Line 1; Delete 'Less than 3 cables northeast' and substitute '3 cables WNW' p. 100; RH col; para. <i>Belnahua</i> ; Line 1; Delete 'four' and substitute 'three'	No. 876
Page 96	Firth of Lorn; Index plan p.96; Index plan; Delete 'Cables' below the drawn scale and substitute 'Miles'	No. 877
Page 105	Firth of Lorn; Barrnacarry Bay anchorage p.105; RH col; <i>Directions</i> ; Add at end of para: 'Good holding in fine dark sand.'	No. 840

p..106; RH col; para 2; Line 4; **Delete** 'Pontoon use by prior arrangement'

p.121; Plan; **Add** a symbol for a perch and label 'Perch' at the north end of the drying (2.4) shoal lying NW of Lismore (similar to that shown on the plan on p.126).

The light on the dolphin north of the jetty has been moved to the NE corner of the jetty itself. The dolphin is now unlit and there is only one dolphin north of the jetty, the outer one having been removed.

p.134; Plan; **Amend** as the plan below.



p.136; Index plan; **Delete** 'Cables' below the drawn scale and **substitute** 'Miles'

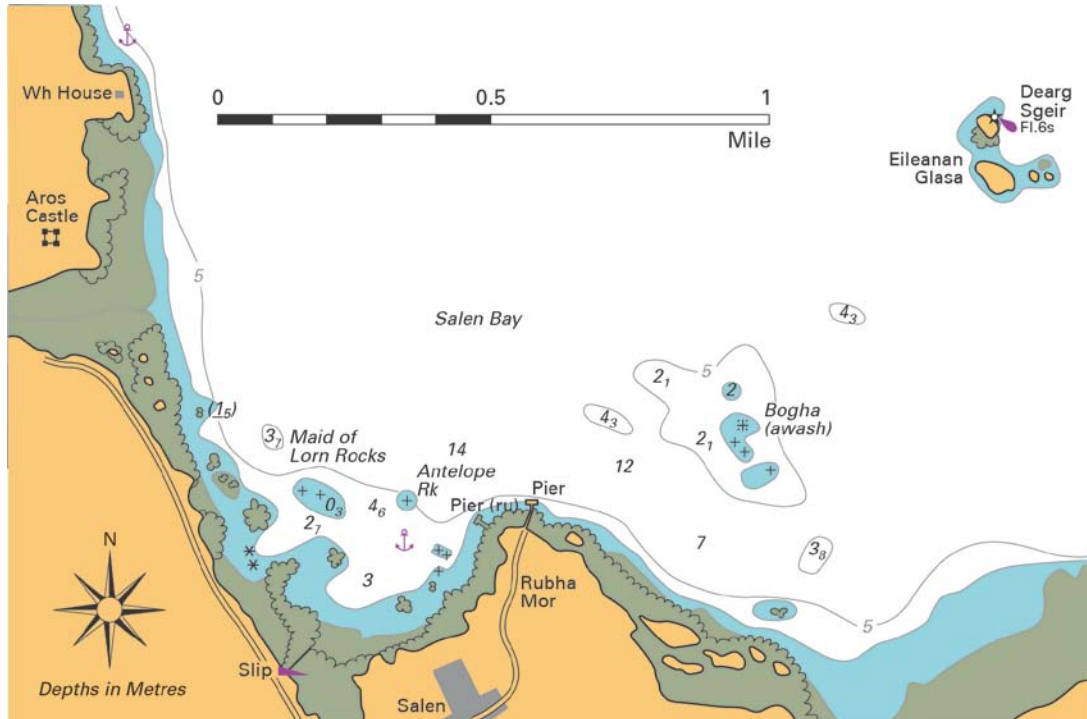
p.138; RH col; *Directions*; para.1; Line 6; **Delete** 'north' and **substitute** 'NNW'
 p.138; RH Col; *Directions*; para.3; Line 1; **Delete** 'NNW' and **substitute** 'WNW'

p.139; RH col; para. *Ardtornish Bay*; Line 3; **Delete** 'Anchor in 7m off the boathouse.' and **substitute** 'Anchor in 7m, stiff mud, midway between the house and the boathouse'

A recent survey has shown submerged and drying rocks lying up to a cable off the west shore of Rubha Mor.

p.140; LH col; *Directions*; para. 2; Line 5; **Delete** all from 'Approaching Rubha Mor' to 'enter the bay and anchor' and **substitute** 'Entering the bay aim to keep 1 1/2 cables off the west side of Rubha Mor, to avoid submerged and drying rocks lying off it, thus leaving the Antelope Rock (LD 1·1) about a cable to starboard. Anchor...'

p.140; Plan; **Delete** '(ru)' after 'Pier' and **add** 'Pier (ru)' close by the drying pier symbol on the northwest side of Rubha Mor. **Insert** rocks off the west side of Rubha Mor as plan below:



p.141; LH col; *Directions*; para 3; Line 2; **Delete** 'the end of' and Line 4; **Delete** 'the east end of' Line 5; **Insert** new sentence after 'west shore': 'Both should be given a good berth as rocks extend up to 1/2 cable beyond the beacons.'

p.144; LH col; *Communications*; Line 2; **Amend** to: 'Piermaster (Jim Traynor) Tel: 07917832497'

Line 4; **Amend** to: Harbour Association Tel: 01688 302876

The New Rocks starboard hand buoy has been replaced by a West cardinal buoy in a position approximately a cable due west of the present buoy.

p.145; LH col; para 1; Line 5; **Delete** 'G conical light buoy which marks the south' and **substitute**: 'west cardinal light buoy which marks the southwest'

p.145; RH col; *Lights*; Line 4; **Delete** 'G conical buoy Fl.G.6s' and **substitute** 'W cardinal buoy Q(9)15s'

p.146; LH col; *Dangers*; para.2; Line 3; **Delete** 'southern' and **substitute** 'southwestern' and Line 4; **Delete** 'G conical buoy and **substitute** 'west cardinal mark'

p.146; RH col; *Lights*; Line 4; **Delete** 'G conical buoy Fl.G.6s' and **substitute** 'W cardinal buoy Q(9)15s'

p.136; Plan; **Replace** the Fl.G.6s conical buoy marking the rocks NNE of Rubha nan Gall with the symbol for a W cardinal buoy Q(9)15s.

The latest edition of chart 2652 has deleted the isolated drying and 2m rocks lying off the east shore of Lunga. The approach directions from the northeast and south have been extensively rewritten to reflect this and are given in full below:

p.159; LH col; *Directions*; para. 4; **Delete** 3 paras. from 'From the northeast' to 'shoal patch shown on the plan.' and **substitute**: 'From the south it is necessary to give the southernmost large drying patch, which lies due east of the summit of Lunga, a wide berth. Until recently rocks have been shown lying off the Lunga shore but the 2013 edition of chart 2652 indicates that the Lunga shore is reasonably clean. Therefore approach the southern entrance by steering towards the eastmost point of Lunga and then follow its shore round, keeping between $\frac{1}{2}$ to $\frac{3}{4}$ cable off until well past a very shallow patch and an isolated rock (LD1·7) further north.

From the east head for the midpoint of Lunga before following the southern approach and, from the northeast, keeping the south point of Lunga well open of the north point of Bac Mor, bearing 235° (photo below), leads clear of all the drying rocks east of the islands.'

p.158; Plan; **Delete** the symbols for drying and 2m rocks lying off the east shore of Lunga, including their associated 2m contours.

p.180; Index plan; **Delete** 'Cables' below the drawn scale and **substitute** 'Miles'

The south cardinal buoy marking Bogha hun a Chuhoil has been moved. It now lies approximately a cable due south of the rock.

p.191; LH col; para 5; Line 3; **Delete** 'on its SW side.' and **substitute** 'lying a cable due south of it.'

pp.186 & 190; Plans; **Move** the south cardinal buoy marking Bogha hun a Chuhoil to a position a cable due south of the rock symbol.

p.202; On the lower table **amend** 'Lady Rock' to Lismore LtHo / Lady Rock' in both instances.

p.203; On the upper table **amend** 'Lismore LtHo' to Lismore LtHo / Lady Rock' in both instances.

Amendments added Apr 2015

- Page **Frontispiece plan ; Amendment to page ref.** No. 788
p.iv; Frontispiece plan; The page reference for 9, West Coast of Mull, should be 'p.154.' Also amend '150' to '154' on the list of contents on the opposite page.
p.iv; Frontispiece plan; The page reference for Loch Tarbert, Jura should be p.47.
-
- Page 106 **Kerrera Sound, Sgeir an Fheurain ; Buoy established** No. 834
p.106; LH col; *Directions*; para 2; Line 1; **Delete** all after 'light beacon' and **substitute** 'must be noted. Starboard and port hand lit buoys mark Sgeir an Fheurain, a drying shoal off the mainland shore, and a shoal at the mouth of Little Horseshoe Bay.'
p.106; LH col; *Lights*; **Insert** after line 1; 'Sgeir an Fheurain buoy; Fl.G.3s'
p.107; Plan; **Insert** symbol for a starboard hand lit buoy 1/2 cable SW of the drying shoal which lies off the mainland shore and is due east of the Sgeirean Dubha beacon. Label the buoy 'Fl.G.3s' and label the shoal it is marking 'Sgeir an Fheurain'
-
- Page 106 **Kerrera Sound; Buoy established** No. 835
A new port hand buoy, marking the Kerrera side of the main channel, has been laid approximately 3/4 cable WNW of the Ferry Rocks West buoy.
p.106; *Directions*; para 3; Line 3; **Delete** all from 'and the ... east side of the Ferry Rocks.' and **substitute** 'where it is marked by port and starboard hand buoys. To avoid large vessels in this narrow channel, small craft should pass east of the Ferry Rocks, now marked by an E cardinal buoy, and then west of the starboard hand buoy marking the shoal off Rubha Tolmach.'
p.107; Plan; **Insert** symbol for a port hand lit buoy approximately 3/4 cable WNW of the Ferry Rocks West (Q.G.) buoy. Label the buoy 'Kerrera Q.R.'
-
- Page 106 **Kerrera Sound; Ferry Rocks East buoy changed** No. 836
The Ferry Rocks East buoy has been changed to an East Cardinal buoy. The amendment needed for the *Directions* para. was incorporated into the text amendment for Notice 835
p.106; *Lights*; Line 6; **Amend** 'Fl.R.5s' to 'Q(3)10s'
p.107; Plan; **Amend** the symbol for the buoy SE of the Ferry Rocks to a lit E cardinal buoy and **amend** 'Fl.R.5s' to 'Q(3)10s'
-
- Page 187 **Sound of Iona; Erraid pier anchorage** No. 790
p.187; RH col; *Anchorage*; **Insert** new para after *Fionnphort*; 'Erraid Pier There is a good occasional anchorage in the bay north of Erraid. Approach from the northwest, noting the drying reef extending almost a cable from the south shore, and anchor in 2-3m, sand, about a cable northwest of the pier.'
p.186; **Add** anchor symbol a cable NW of pier on Erraid and also **add** anchor symbol to the plan on p.188
-