

Outer Hebrides (2013)

This PDF file contains all the amendments for the above volume of the CCC Sailing Directions issued since the edition date shown. They are grouped by the date of issue and listed by page number. Plans are included only where major changes have been made or when certain amendments are difficult to describe.

Users should be aware that the amendments to this website are not made with the same frequency as those issued by official hydrographic and navigational sources . Accordingly it remains necessary for those who use the CCC Sailing Directions as an aid to navigation to consult the most recent editions of Admiralty charts, all relevant Notices to Mariners issued by the UKHO, NLB, Port Authorities and others in order to obtain the latest information.

Caution

Whilst the Publishers and Author have used reasonable endeavours to ensure the accuracy of the contents of the Sailing Directions, and these amendments to them, they contain selected information and thus are not definitive and do not include all known information for each and every location described, nor for all conditions of weather and tide. They are written for yachts of moderate draft and should not be used by larger craft. They should be used only as an aid to navigation in conjunction with official charts, pilots, hydrographic data and all other information, published or unpublished, available to the navigator. Skippers should not place reliance on the Sailing Directions in preference to exercising their own judgement.

To the extent permitted by law, the Publishers and Author do not accept liability for any loss and/or damage howsoever caused that may arise from reliance on the Sailing Directions nor for any error, omission or failure to update the information that they contain.

The plans in the Sailing Directions and amendments are not to be used for navigation. They are designed to support the text and should at all times be used with navigational charts.

Amendments added Apr 2017

Page 7

Introduction ; Weather forecast channels to be changed

No. 954

In September 2017 the Coastguard is due to change the VHF channels used for the MSI weather forecast broadcasts. The new channels are as given below:

Present Replacement

Ch. 23 Ch. 62

Ch. 84 Ch. 63

Ch. 86 Ch. 64

Channel 10 will remain unchanged as will the initial announcement on Ch. 16.

p.7; LH col; *HMCG Broadcasts*; para 7; line3; **amend** '23, 84, 86' to '62, 63, 64'

p.7; RH col; lines 3-5; **amend** channels as above.

p.13; RH col; Plan; **amend** channels on plan.

Page 23

Barra, Castlebay; New pontoons

No. 958

The first phase of a pontoon installation has been completed on the west side of Castle Bay and more finger berths will be added during 2017.

p.23; *Anchorage; Castlebay*; para 1; line 1; **Delete** 'The bay northeast ... ferry terminal' and **substitute** 'A 12 berth pontoon has been established (2017) on the west shore of the bay and there are 8 visitors' moorings between the pontoon and the ferry pier.'

p.23; *Supplies and services*; para 1; line 1; **Delete** 'Water by hose on pier' and **substitute** 'Water and electricity at pontoon.'

p.23; *Supplies and services*; para 1; line 6; **Delete** 'Supermarket ... internet access.' and **substitute** 'Supermarket, leisure centre with showers, swimming pool and a library with internet access are near the pontoons at the west end of the town.'

Page 29

North Bay, Barra, Ardveenish; New commercial harbour

No. 935

A new commercial quay has been built on the northeast side of Ardveenish.

p.29 LH col; para. 1; line 7; **Insert** after 'North Bay.' 'A new fishing boat harbour lies northeast of Ardveenish but yachts should use Bay Hirivagh, where fishing vessels also use the old quay.

p.29; '*Bay Hirivagh*'; line 1; **Delete** all from 'A beacon...shows at LW.'

Page 41

Loch Boisdale; Diesel supplies at marina

No. 915

Diesel supplies at the marina are not by hose and administered by Comhairle nan Eilean Siar, but are by can through the Lochboisdale Marina Office.

Delete amendment no. 809 (issued April 2015).

Amendment No. 812 (issued April 2015). also needs correction:

Line 8: **Delete** 'by fuel fob'; **substitute** 'in limited quantities by can'

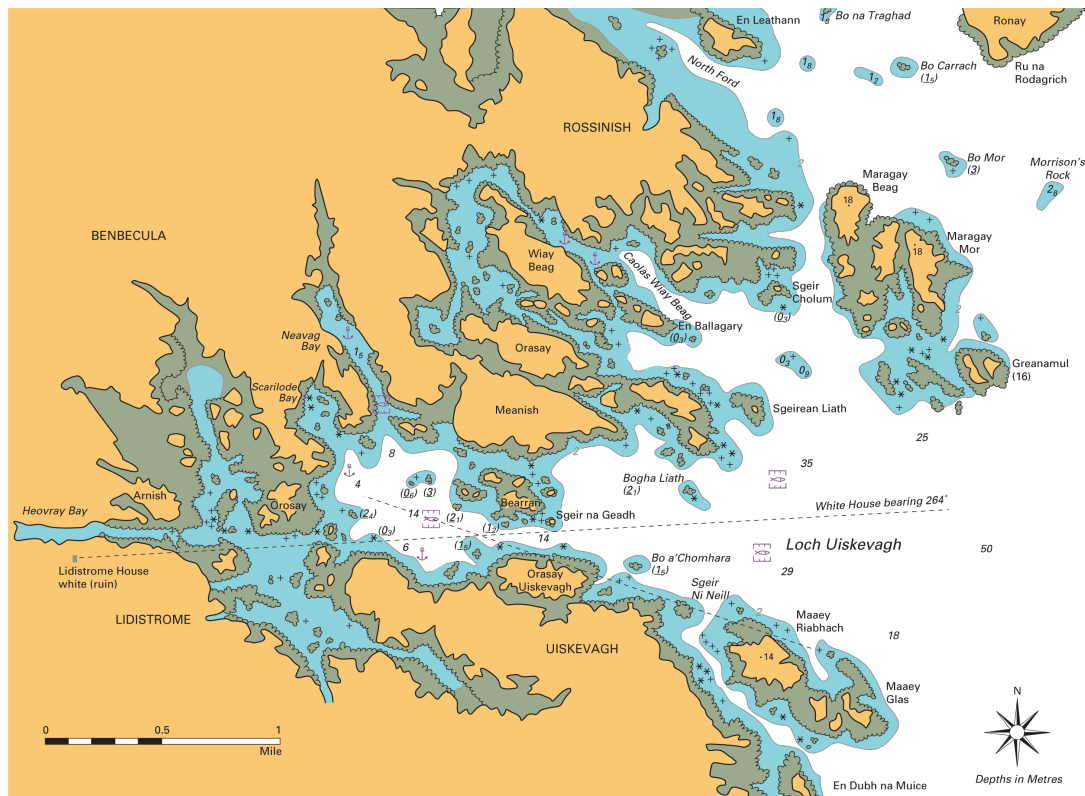
Last line: **Insert** 'by can' after 'diesel'

Also **insert** marina contact details: 01878 700830 and 07586 787678

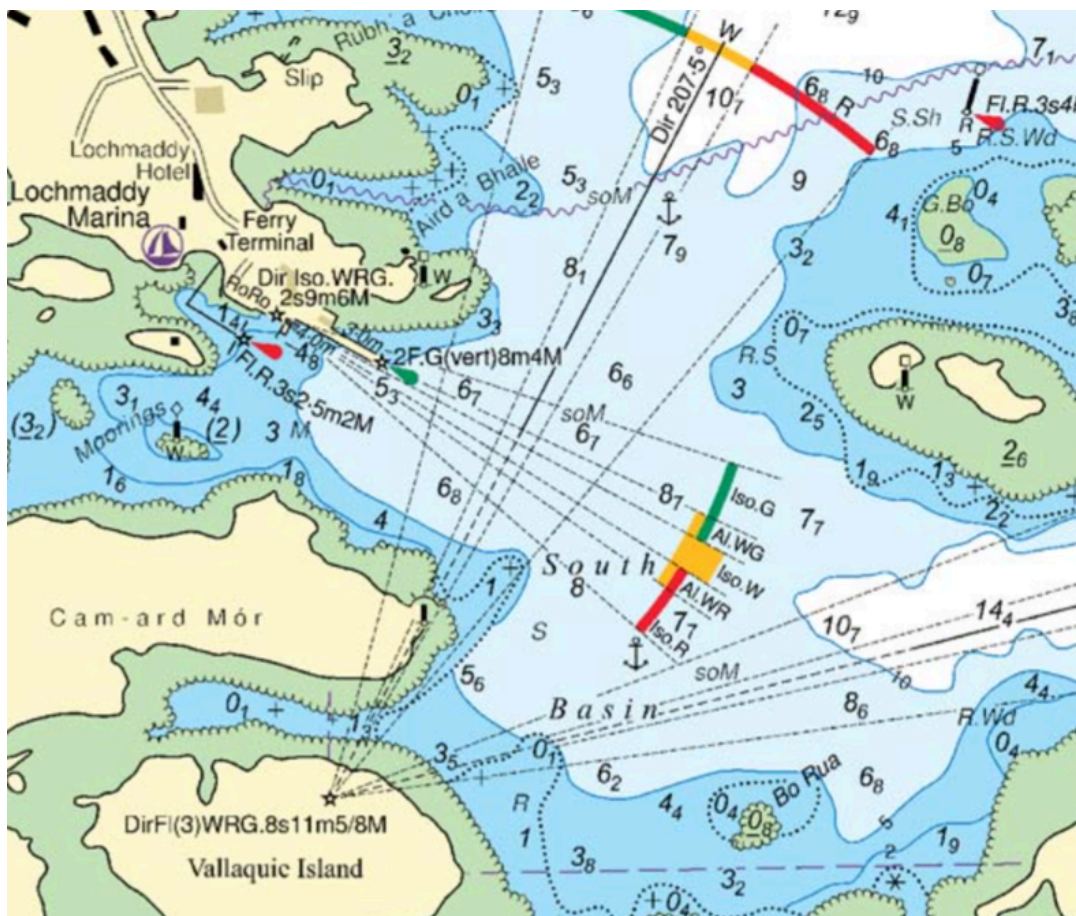
Two fish farms have been established at the mouth of the loch and the fish farm in the inner loch has been relocated.

p.57; LH col; *Directions*; para 2; line 3; Delete 'head SW...the entrance or' and **substitute** 'head SW and aim to pass between two large fish farms which lie either side of the leading line and'

p.57; LH col; *Directions*; para 3; line 6; Delete 'and the west...northern part of the loch' and **substitute** 'Continue on this bearing passing south of another fish farm in the inner loch. When past the pens steer NW towards the anchorages in the northern part of the loch or south towards the anchorage in the bay west of Orasay Uiskevagh.'



p.70; Plan; **Delete** Oc.G.8s and **substitute** 'Dir.Iso.WRG.2s9m6M' and show sectors as on the UKHO chartlet extract below:



p.84; Plan; Delete '& Bn' below 'Cairn' at the north end of Ensay, in both instances.

pp.91 & 92; Plans; Delete label 'Hotel'

Amendments added Apr 2016

Page 40

Lochboisdale; New marina plan

No. 903

Further to amendment 812, the plan of the new marina, below, is taken from the latest edition of Chart 2770



Page 43

Loch Eynort, Sruthan Beag; Directions amended

No. 770

Further to amendment 813 and an Antares survey, the directions for the Sruthan Beag channel have been amended.

p.43; RH col; *Directions*; para 2; **Delete** entire para. and **substitute** 'To pass through the narrows on the north side of Bo Dearg follow the north shore between 40-50m off the rock face until clear of Bo Dearg then, soon after the inner leg of the channel leading northwards begins to open, head west to clear an awash rock lying about 1/4 cable west of the SE side of the entrance. Once the inner channel is fully open, head north into it maintaining a mid-channel course until the Upper Loch is reached.

p.42; Inset plan; **Delete** the 1.3 sounding at the SE entrance to Strue Beag and **substitute** the symbol for an awash rock. Also substitute the 2m rock symbol on the main plan with an awash rock symbol.

p.43; RH col; *Directions*; Last para; **Delete** entire para. and **substitute** 'On the outward passage beware of the above-mentioned awash rock at the SE end of the inner channel and guard against being swept towards Bo Dearg if it is covered

Page 71

Lochmaddy; Supplies

No. 869

p.71; RH col; *Services and supplies*; Line 2; **Insert** after 'Sollas': 'and Balivanich'

Page 91

Rodel; Bay channel perch

No. 853

p.91; Photograph caption; Line 3; **Delete** all after '2011' and **substitute** 'The topmark was reported missing in 2015'

Page 111	Loch Seaforth; Inshore dangers	No. 904
	<p>A recent Antares survey of the anchorages in Loch Seaforth has revealed rocks with less than 2m over them up to a cable offshore.</p> <p>p.111; LH col; para 1; Delete the last sentence and substitute 'There are several dangers in the approach but the loch appears to be reasonably clean within, although the plan is to a small scale and does not show all inshore dangers. Accordingly give the shores a generous berth and approach anchorages with great care.'</p> <p>p.111; RH col; <i>Anchorages</i>; para 3; Insert at end 'Entering the anchorage there is a rock with only 0.2m over it, a cable east of the point and 1/2 cable off the shore.'</p>	
Page 129	Stornoway; Marina - Launderette	No. 873
	<p>p.129; RH col; <i>Supplies and services</i>; para 2; Insert at end 'Launderette at marina'</p>	
Page 131	Whale Rock; South cardinal buoy discontinued	No. 899
	<p>p.131; RH col; <i>Lights</i>; Last line; Delete entire line</p> <p>p.136; RH col; <i>Lights</i>; Line 4; Delete entire line</p>	

Amendments added Apr 2015

Page	Frontispiece plan ; Amendment to page ref.	No. 805
	Page ref for St Kilda should be p.152	
Page 9	Introduction ; Visitors' moorings In some places pontoons have replaced moorings and a fifteen day pass is now available as well as a monthly pass. p.9; RH col; para 1; Line 1; Delete 'All' and substitute 'Most' p.9; RH col; para 2; Delete entire para. and substitute 'In some places an Honesty box is provided at the dinghy landing but the simplest way is to pay online after a cruise at www.cne-siar.gov.uk .' p.9; RH col; para 3; Line 4; Delete '£74.00 plus VAT(2014)' and substitute '£74.00 (2015 - for craft up to 10m) plus VAT. ' p.9; RH col; para 3; Line 6; Delete all from '4 weeks' ... Authority' and substitute 'a month, with the exception of Stornoway, Lochmaddy and Lochboisdale, where there are locally run marinas. 15 day passes are available at half the monthly rate.' p.9; RH col; para 4; Line 5; Delete Loch Boisdale ... 6 moorings' p.9; RH col; para 4; Line 7; Delete '8' and substitute '4'	No. 807
Page 10	Introduction ; Pontoons The new pontoons at Loch Maddy and Loch Boisdale are now in operation and pontoons are planned for Castlebay and East Loch Tarbert. p.10; LH col; <i>Pontoons</i> ; para 1; Line 6; Add new line: 'Leverburgh, Harris' p.10; LH col; <i>Pontoons</i> ; para 2; Line 2; Delete all from 'but the ... be determined' and substitute 'Loch Boisdale and Loch Maddy.' p.10; LH col; <i>Pontoons</i> ; para 3; Lines 2 & 3; Delete 'Loch Boisdale and Loch Maddy' and substitute 'Castlebay and East Loch Tarbert' p.10; LH col; <i>Pontoons</i> ; para 3; Line 4; Delete 'again'	No. 808
Page 11	Introduction ; Diesel available at Loch Boisdale p.11; RH col; Diesel; Line 6; Insert 'Loch Boisdale' after 'Kallin'	No. 809
Page 11	Introduction ; Access to W.I. Council diesel service For access to the Western Isles Council diesel tanks a key fob is now issued in place of a card and a Direct Debit has to be set up. p.11; RH col; <i>Diesel</i> ; para 1; Lines 13, 15 19; Amend 'card' to 'fob' para 1; Line 15 Amend 'days' to 'weeks' para 1; Line 21; Amend 'invoiced' to 'Direct Debited' para 2; Line 3; Amend 'card' to 'fob'	No. 810
Page 13	Barra & Vatersay; Mobile coverage p.13; LH col; para 2; Add after 'waters': 'though the EE (Orange) network is best in Barra and Vatersay.'	No. 806
Page 17	Ushenish Lt. Ho, South Uist; Red sector discontinued p.17; RH col; <i>Lights</i> ; Line 6; Delete 'Fl.WR20s54m19/15M' and substitute 'Fl.20s54m19M' p.39; LH col; <i>Lights</i> ; Line 1; Delete 'Fl.WR20s54m19/15M' and substitute 'Fl.20s54m19M'	No. 811

Page 35	Sound of Barra; New wind turbine	No. 818
	<p>A new wind turbine at the north point of Barra now provides a good landmark when approaching the Sound of Barra from the west or southwest.</p> <p>p.34; Plan; Insert symbol for a wind turbine at the point marked '·78' at the northern extremity of Barra.</p> <p>p.35; RH col; <i>Eastward Passage</i>; Line 1; Delete 'If approaching ... Stack Island' and substitute 'Approaching from the SW or west, the sound is not easily identified but a new wind turbine at the north point of Barra is now a valuable landmark. When the sound is well open the sharp peak of Ben Scrien on Eriskay should be seen showing north of Fiaray.'</p>	
Page 40	Loch Boisdale; New Harbour and marina	No. 812
	<p>A new harbour has been made by joining Rhubha Bhuaile to Gasay by a causeway and building a breakwater on its north side. Amended plans and photographs are not yet available but will be included in a 2nd edition of <i>Outer Hebrides</i> or future amendments.</p> <p>p.40; RH col; para 3; Line 1; Delete 'usual' and Line 5; Delete 'if heading for the visitors' moorings'</p> <p>p.41; LH col; <i>Anchorage</i>; para 1; Delete all from '6 visitors ... Hollisgeir' and substitute 'Marina, A new harbour area and pontoon facility has been created north of a new causeway linking Rubha Bhuaile and Gasay. Visitors' berths with water and electricity. Diesel by fuel fob'</p> <p>p.41; LH col; <i>Anchorage; West of Rubha Bhuaile</i>; Line 1; Delete 'From the pier ... Cap Rock' and substitute 'Approach from the south of Gasay'</p> <p>p.41; RH col; <i>Supplies and services</i>; Line 1; Add after 'Lochboisdale': 'At marina: Water, diesel, toilets and showers'</p>	
Page 43	Loch Eynort; Sruthan Beag marks not visible	No. 813
	<p>The ruined bothy and the white marks on the rock face are reported as being no longer visible. Fish farm removed.</p> <p>p.43; RH col; <i>Directions</i>; para 2; Line 2; Delete '20m ... Bo Dearg' and substitute 'between 30 -40m off the rock face until clear of Bo Dearg.'</p> <p>p.43; RH col; <i>Anchorage; Poll Craigavaig</i>; Line 3; Delete 'clear of fish farming equipment'</p> <p>p.43; RH col; <i>Anchorage; Poll Craigavaig</i>; Line 4; Delete 'off the ruined bothy' and substitute ' southwest of the entrance to Strue Beag.</p> <p>p.42; Inset plan; Delete 'Ruined bothy' and the associated leading line. Also delete the fish farm symbol in the Poll Craigavaig anchorage.</p>	
Page 46	Loch Skipport; Wizard Pool - Caolas Mor channel	No. 814
	<p>p.46; Plan; Replace the sounding of 1·3 in the channel between the Wizard Pool and Caolas Mor with a sounding of 2·6</p> <p>p.47; LH col; <i>Anchorage</i>; para 3; Lines 1&2; Delete 'except at LW ... is 1·3m' and substitute 'with care'</p>	

Page 71	Loch Maddy; Marina now operational	No. 815
	<p>The new marina noted in 2014 (Amendment 759) is now complete. It occupies the small bight to the west of the Ro-Ro pier.</p> <p>p.67; Lower photo caption; After 'Loch Maddy' insert before pontoons installed'</p> <p>p.68; RH col; <i>Lights</i>; Add 'Marina pontoon Fl.R3s2.5m2M'</p> <p>p.71; LH col; <i>Anchorage</i>; paras 1, 2 & 3; Delete all three paras. from 'Anchoring ...topmark' and substitute 'Marina There is a small 26 berth marina in the bight to the west of the Ro-Ro pier. The pontoons are serviced with water and electricity. Depth is limited at the inner berths and 2m is found only at the outer third of the pontoon. Larger craft should berth at the hammerhead and approach it from the south.</p> <p><i>Near the Ro-Ro terminal</i> So as to keep clear of ferries and the approach to the marina do not anchor northwest of a line between the pierhead and the two visitors' moorings. Anchor in 3-4m southeast of the visitors' moorings but note the reef to the SW (dries 1·7m), marked by a perch with a topmark.'</p> <p>p.71; RH col; <i>Services and supplies</i>; Line 4; Delete 'water hose at pier' and substitute 'water at pontoon'</p>	
Page 71	Loch Maddy; Oronsay visitors' moorings removed	No. 816
	p.71; LH col; <i>Anchorage</i> ; <i>Oronsay</i> ; para 2; Line 5; Delete 'There are ... and'	
Page 86	Leverburgh; New pontoon	No. 817
	p.86; RH col; <i>Anchorage</i> ; para 1; Add after 'knowledge': 'A pontoon has been installed on the north side of the pier for small boats. Visiting yachts should leave the outer berths clear for trip boats.'	
Page 92	Loch Finsbay; Depths	No. 822
	<p>p.92; Plan; Drying rocks east of Eilean Quidnish; Add note (Covers HW)</p> <p>p.92; Plan; Amend depth shown against Sgeir na h-Acairseid from (1·5) to (1·9)</p> <p>p.93; LH col; <i>Directions</i>; para 3; Line 7; Amend '1·5' to '1·9'</p>	
Page 95	Poll Scrot, South Harris; Toilet and shower	No. 823
	p.95; RH col; <i>Supplies</i> ; Line 2; Add 'Toilet and shower at quay'	
Page 103	Scalpay, North Harbour; Depths	No. 819
	<p>p.103; LH col; <i>Anchorage</i>; Line 2; Amend 1·1m to 0·5m</p> <p>p.103; RH col; Plan; Amend depth at shallow patch east of Coddem from 1·1 to 0·5</p>	
Page 127	Loch Grimshader; Anchorage and depths	No. 821
	<p>p.127; <i>Directions</i>; Line 8; Delete 'rapidly'</p> <p>p.127; RH col; <i>Anchorage</i>; <i>Head of the loch</i>; Line 1; Delete 'in bays' and Line 2; Add 'Good anchorage in 7-8m off slip on south side'</p>	
Page 136	Sound of Harris to Loch Roag; Shelter	No. 820
	p.136; Insert new section: 'Shelter - From the Sound of Harris and into Loch Roag it is a little over 40 miles. If caught out in bad weather, shelter can be found in Loch Leosavay (p.140) and further north in either Loch Resort or Loch Tamnavay (p.143).'	

Amendments added Apr 2014

Page 9

Introduction ; Mooring charges

No. 760

The charges for visitors' moorings have been increased and those for 2015 can be seen on the Council's website at: <http://www.cne-siar.gov.uk/harbourmaster/dues.asp>

In particular note that the cost of the Visitors' cruising pass has increased to £74.00 plus VAT for boats up to 10m and the pass now lasts for 4 weeks.

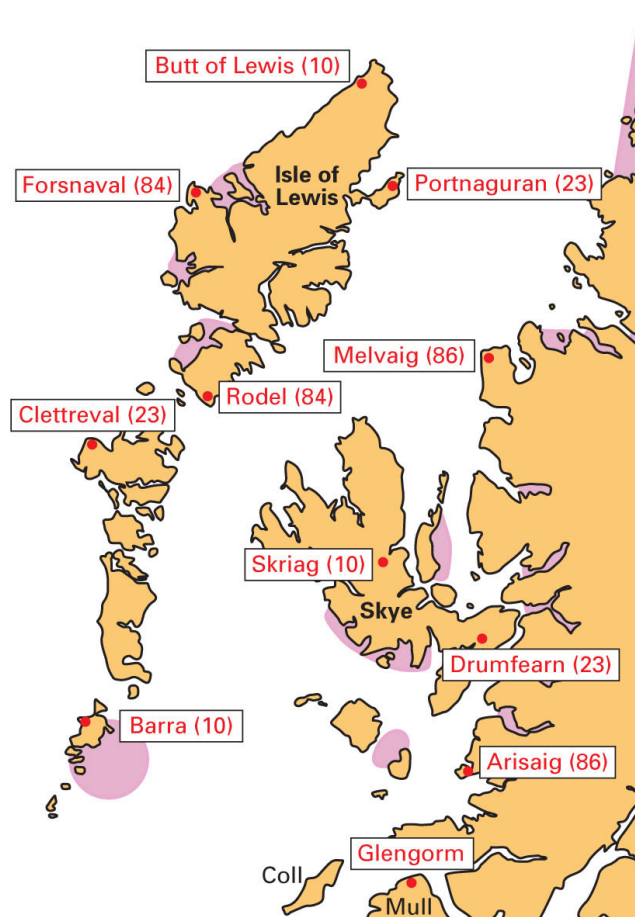
p.9; RH col; para 3; Line 4; Delete '£55.91 (2012)' and substitute '£74.00 plus VAT(2014)' and Line 6; Delete '8' and substitute '4'

Page 13

Introduction ; CG VHF aerals

No. 701

RH col; Plan; Substitute amended plan below showing Glengorm.



Page 14

Introduction ; Leverburgh lifeboat

No. 754

LH col; *Lifeboats*; Line 2; Delete 'and a station...went to press.' and insert after 'Castlebay': 'Leverburgh.'

Page 14

Introduction ; Notes on SDs

No. 757

RH col; *Tides*; para 2; Line 4; Delete '3.4 2.9 1.9 1.0 0.4' and substitute: '5.2 3.9 3.0 2.1 0.7'

Page 17

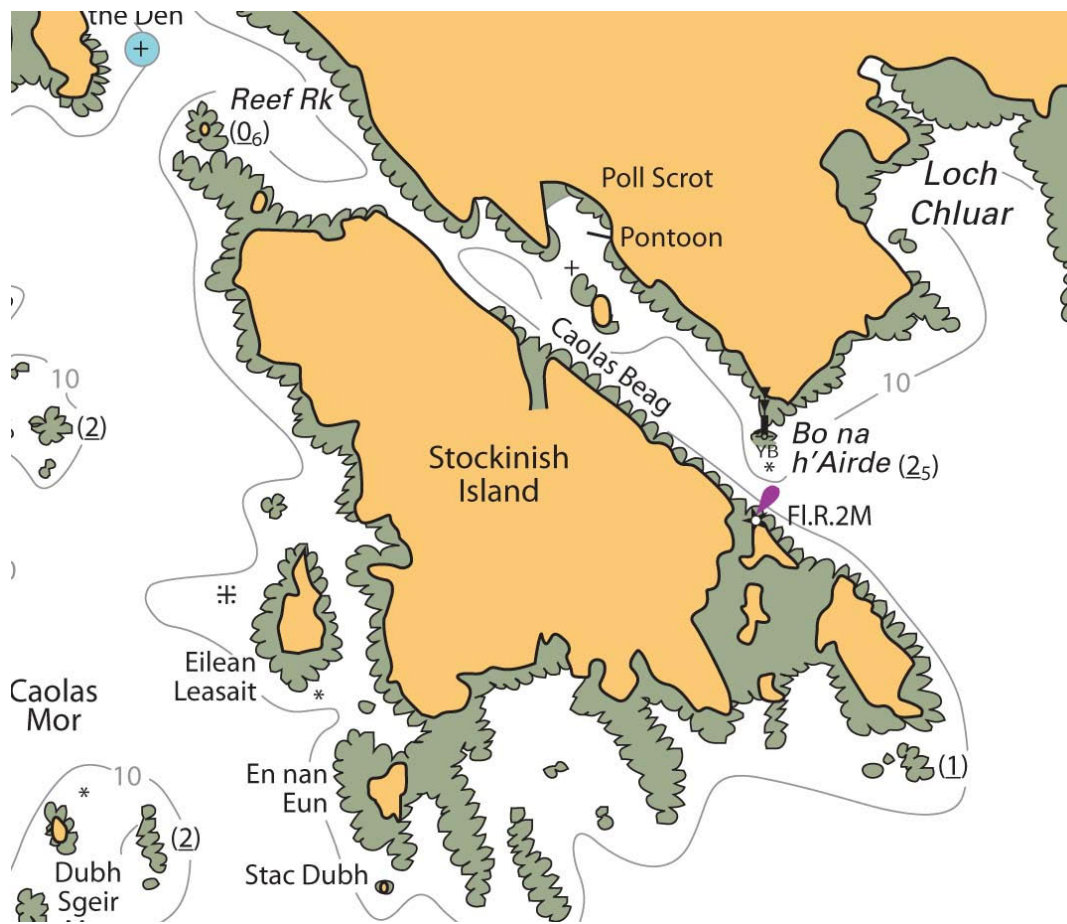
Crossing the Sea of the Hebrides; Sanday Light (minor correction)

No. 725

RH col; *Lights*; Insert after line 2: 'Canna (East end of Sanday) Fl.10s32m9M'

Page 18	Barra & Sound of Barra; New editions of charts	No. 736
	The UKHO survey mentioned in the Preface has now been completed and new editions of the relevant charts have been published. The amendments to a great many depths are too numerous to describe in the Sailing Directions but, as they frequently report less water, they are of significance. All yachts intending to spend time in this area should ensure that they carry the latest editions of Chart 2769 <i>Barra Head to Greian Head</i> (Edition Sept 2013) and Chart 2770 <i>Sound of Barra</i> (Edition Aug 2013). See also CCC amendment No 758	
Page 20	Sound of Sandray; Awash rock	No. 758
	As a result of the recent UKHO survey (see CCC amendment No. 736) an awash rock has been identified in the centre of the channel at the east end of the Sound of Sandray. p.20; <i>Directions</i> ; para. 2; Line 2; Delete 'and a 2m patch' and substitute : 'an awash rock' p.18; Plan; Add symbol for an awash rock in the blue patch at the eastern entrance to the Sound of Sandray	
Page 23	Castle Bay, Barra; Sgeir Dubh light	No. 726
	LH Col; <i>Lights</i> ; Line 4; Delete '6/4M' and substitute : '5M'	
Page 23	Castlebay; Supplies - Gas	No. 731
	p.23; RH col; <i>Supplies and services</i> '; Line 9; Delete : 'Calor... 01871 810408' and substitute 'Calor gas from Barra Island Stores, opposite Co-op.' p.29; LH col; <i>Supplies</i> ; Line 2; Delete : 'No gas but telephone 01871 810408'	
Page 27	North Bay Barra; Photograph	No. 728
	Insert 'North Bay' before 'Barra' in the caption to the upper photograph	
Page 40	Loch Boisdale; Light moved & construction work	No. 729
	Following the deletion (see CCC amendment No. 715) of the pierhead light (Iso.R.G.) the 2F. G. (vert)3M light, previously on the linkspan dolphin, has been re-located to the pierhead. Its characteristic remains the same. p.40; Amend the plan accordingly. p.41; RH col; <i>Lights</i> ; Delete 'Ferry terminal linkspan' and substitute : 'Ferry terminal pierhead'	
	Note that during 2014 and 2015 major construction work will be underway at Loch Boisdale linking the island of Gasay with the shore to create a new commercial quay. On completion, pontoon berths for visiting yachts will be positioned in Bagh Dubh.	
Page 41	Loch Boisdale; Eilean Dubh Light extinguished	No. 738
	p.41; <i>Lights</i> ; Delete 'Eilean Dubh Fl(2)R.5s' p.40; Plan; Delete Fl(2)R.5s light on Eilean Dubh and add : 'Works in progress'	
Page 71	Lochmaddy; New marina	No. 759
	A new marina with 26 berths is planned to open in May 2014. It is located in the inlet to the west of the ferry linkspan and visitors' berths will be available. All berths will be serviced with water and electricity. Red diesel will be available in cans. For the 2014 season, visitors moorings to the south of the marina and in Ardmaddy Bay and east of Oronsay will be maintained. Full amendments for inclusion in the Directions will be confirmed at a later date.	
Page 79	Berneray Harbour; Depth amendment	No. 735
	LH col; <i>Anchorage</i> ; <i>The harbour</i> ; Line 1; Delete 1.3m and substitute 2.0m	

A lit perch has been established off Stockinish Island on the south side of Caolas Beag.
p.94; Plan; Insert symbol for light, Fl.R.2M, in position indicated on plan extract below



RH col; Facilities; Line 2; Delete 'Petrol...Calor Gas' and substitute: 'Petrol, diesel and Calor gas at filling station, 3M (see p.139).'

The marina in Stornoway has been extended to provide 70 berths. Boats up to a maximum length of 24 metres can be accommodated.

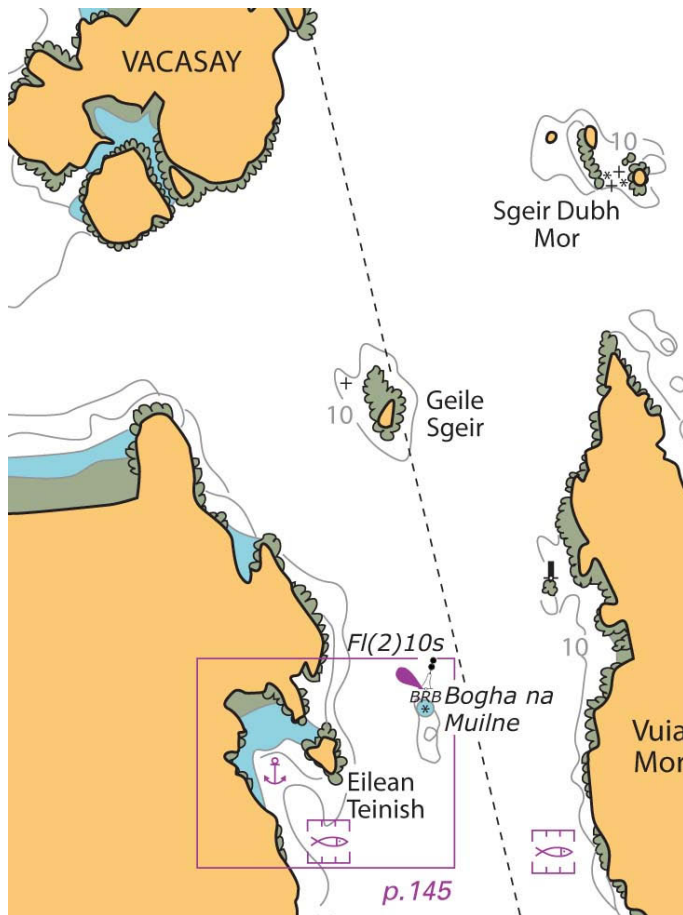
p.129; LH col; Berthing; Delete the entire paragraph and substitute the following: 'There is a marina at Cromwell quay in the inner harbour which has recently (2014) been extended to provide 70 berths for boats up to 24 metres. There should now be more room for visiting yachts but availability should be checked by calling up the Harbour Office on Ch.12. All berths are serviced with water and shorepower and WiFi is available.'

RH col; Anchorages; Loch Bun Abhainn-eader; Last line; Add at end: 'from where Calor gas is also obtainable. '

p.144; Plan; **Insert** symbol for a BRB Isolated Danger buoy, Fl(2)10s, immediately north of Bogha na Muilne and a marine farm symbol off the west side of Vuia Mor, positioned as on the plan extract below.

p.145; Plan *Eilean Teinish*; **Insert** buoy as described above and below

p.146; *Directions*; Line 13; **Delete** 'which lies 1 cable east of Eilean Teinish in the Sound of Vuia' and **substitute**: 'now marked on its north side by an isolated danger buoy (Fl(2)10s)'.



No. 699

RH col; para 1; Line 11; Delete 'In addition Clyde Coastguard ... and 2310.'

No. 716

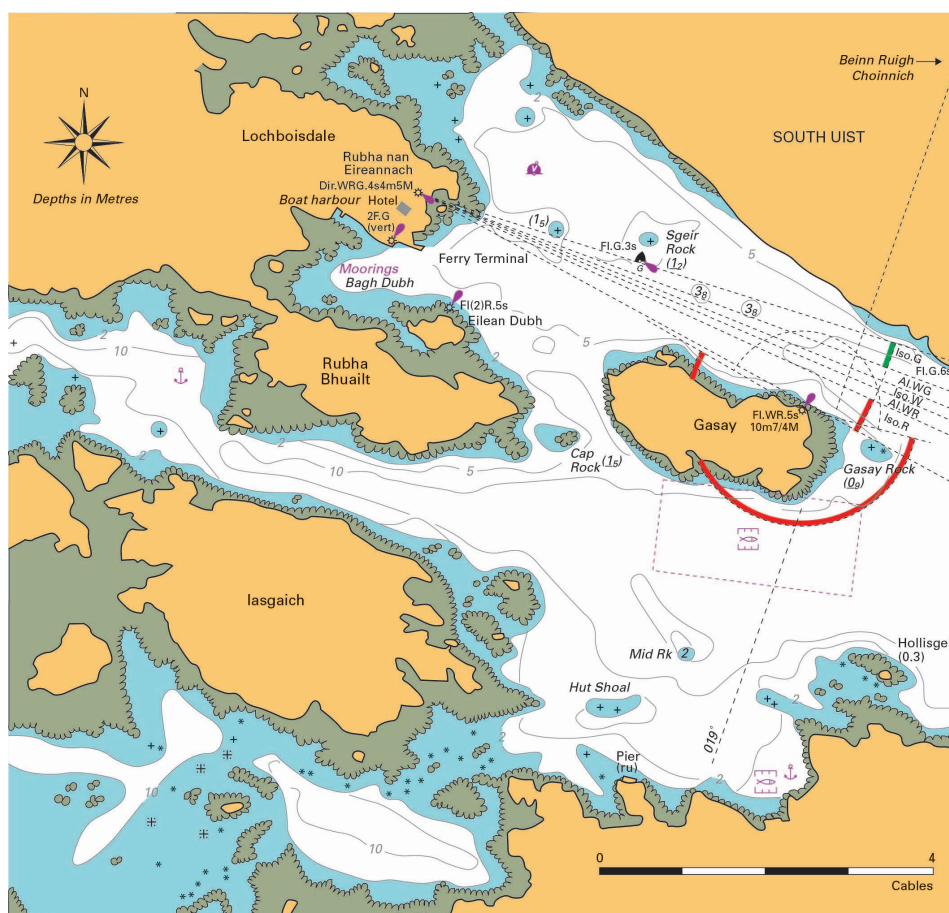
Page 14; LH col; *Coastguard*; Line 4; **Delete** 'Subcentre' and **substitute** 'Coordination Centre';
Line 6; **Delete**: 'will be' and **substitute** 'has been'; Line 10; **Add** at end: 'MMSI 002320024'

No. 714

Plan; **Insert** symbol for drying rock just within the 5m contour line projection ENE of the drying Rubh Dubh Rock.

No. 715

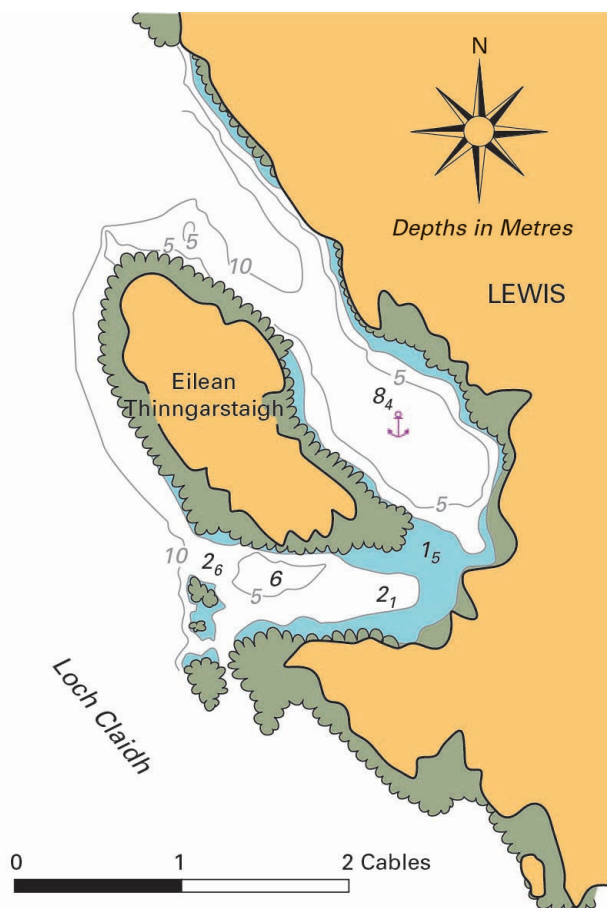
Page 41; RH col; *Lights*; **Delete** 'Ferry terminal pier head Iso.RG.4s8m2M' and **substitute** 'Directional Light (292.5°) DirWRG.4s4m5M'; Last para; Line 2; **Delete** entire line and **substitute** 'beacon, and in the white sector of the Directional light (292.5°),'



Plan; **Delete** the symbol for an unlit beacon on Grocis Sgeir (1 mile east of the SE point of Killegray)

Page 84; Plan; **Amend** the NW leg of the Leverburgh Channel to run in a straight line from the Sgeir Volinish N cardinal buoy to where it joins the Stanton/Outer Stromay Channels.
 Page 85; RH col; Para 1; Line 5; **Delete** all after 'identify' to end of para. and **substitute**: 'the Colasgeir buoy and also the Heb Beacon on Rubh 'an Losaid.'; RH col; Para 2; Line 2; **Delete** all after 'Channel' to end of sentence and **substitute**: 'with the Heb Beacon bearing 118°.'
 Page 86; RH col; Para 1; Lines 1 to 8; **Delete** all from 'Approach' to 'in line 125°' and **substitute**: 'Approach and follow the Outer Stromay channel as described for the Stanton channel (p.85). Pass a cable south of the Red Rock beacon and when about a cable beyond it steer to leave Sgeir Volinish N Cardinal buoy to starboard. When the small iron beacon and Leverburgh pierhead (described above) are in line, turn to starboard and steer 125° on this transit.'

Insert the replacement plan below which shows drying rocks extending east from the SE point of Eilean Thinngarstaigh



The rock in the centre of the entrance to the bay has a LD of 0.3m. It does not dry 0.3m as shown on the plan. The text also requires amending.

Plan: **Amend** 0.3 label to 0.3 and move closer to the rock symbol it refers to.

Text: *Anchorage; Tob Bhrollum*; Line 4; **Delete** entire line and **substitute**: '(dries 0.6m) and another rock with 0.3m over it,'

Page 118	Loch Shell; Amendment to anchorage	No. 702
	RH col; <i>Anchorage</i> s; Delete last para. entirely and amend third para. by inserting '6m' before 'ledge' and '3 cables' before 'west'. Also add after 'fish cages': 'but note drying rocks to the west and north'	
Page 122	Loch Mariveg; Soundings amended	No. 717
	Plan; The isolated soundings west of Sgeir Rainich, <u>1.2</u> and <u>1.5</u> , are depths at LAT and not drying heights. Delete the underlining. The symbol for a drying rock in the southern entrance channel should have a drying height of <u>3.1</u> inserted adjacent to it.	
Page 139	West Loch Tarbert; Loch Bun Abhainn-eader	No. 721
	RH Col; <i>Anchorage</i> s; <i>Loch Bun Abhainn-eader</i> ; Line 2; After 'whaling station' insert 'although the holding is reported as poor.'	
Page 143	Camas Uig; Less water reported	No. 718
	RH col; <i>Camas Uig</i> ; Line 3; Delete 'in 3 metres'; Line 6; After 'islet' insert 'Soundings are less than charted'	
Page 149	Kirkibost, East Loch Roag; Northern entrance channel	No. 720
	LH Col; <i>Kirkibost (Dubh Thob)</i> ; para. 2; Line 7; Delete all after 'west side' and substitute : 'Drying reefs extend beyond both perches reducing the channel width to about 1/3 cable. Pass midway between the perches.'	
Page 154	Appendix; Amendment to Group chart scales	No. 703
	LH col; <i>Admiralty charts</i> ; Line 4; Delete '1:75,000' and substitute '1:200,000'. Line 7; Delete '1:50,000' and substitute '1:100,000'	